

*A Custom Designed Golf Itinerary to  
England & Wales*

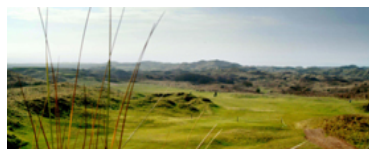
*By*

*IN QUEST OF THE CLASSICS*

IQOTC REF: F706117

**DAY 1: MANCHESTER/PORHCRAWL.** Upon arrival at the airport in Manchester you will collect your rental car, an automatic station wagon with unlimited mileage, CDW, and tax included. (*Airport pick up fee of approximately 20.00 pounds and local road tax of \$2.90 per day must be paid locally.*) **An international driver's license is recommended.** Head southwest into Wales to the Monmouthshire Golf Club. [www.themonmouthshiregolfclub.com](http://www.themonmouthshiregolfclub.com) A superb example of a mature parkland course, it is said to be the oldest 18-hole golf course in Monmouthshire County. If your flight is on time, you should be able to grab a bite to eat in the clubhouse before a start will be OK from 1.00 PM onwards. Check in with the golf pro when you arrive. After golf you will continue to Porthcawl, where we have included a two night stay at the Atlantic Hotel – [www.atlantichotelporthcawl.co.uk](http://www.atlantichotelporthcawl.co.uk).

**DAY 2: GOLF / PORHCRAWL.** 18 holes of golf at Southerndown. [www.southerndowngolfclub.co.uk](http://www.southerndowngolfclub.co.uk) This afternoon we have included 18 holes of golf at the Pyle and Kenfig Golf Club. [www.pandkgolfclub.co.uk](http://www.pandkgolfclub.co.uk). Return to your hotel in the early evening.



**DAY 3: GOLF / SWANSEA.** After breakfast 18 holes on Royal Portcawl – [www.royalportcawl.com](http://www.royalportcawl.com). After a bite to eat continue to the Pennard Golf Club, where a start is confirmed. After golf check into the **White House Hotel** – [www.thewhitehousehotel.co.uk](http://www.thewhitehousehotel.co.uk).

**DAY 4: GOLF / CRICCIETH.** After a full Welsh breakfast travel north today to Aberdovey, a championship links course rated in the top 100 in the UK. Here we have included 18 holes. [www.aberdoveygolf.co.uk](http://www.aberdoveygolf.co.uk) In the afternoon travel to Criccieth for a two night stay at the **Best Western Bron Eifion Country House**, an exquisite country house hotel wonderfully located in Northern Wales near the rugged mountains of the Snowdonia National Park. [www.broneifion.co.uk](http://www.broneifion.co.uk)



**DAY 5: GOLF / CRICCIETH.** This morning you will start your day at the Royal St David's Golf Club, established for over 100 years, and nationally and internationally renowned as the one of the finest traditional championship links courses in the world. [www.royalstdavids.co.uk](http://www.royalstdavids.co.uk) In the afternoon visit the Nefyn and District Golf Club, where you can enjoy a view of the nearby seaside from every hole. [www.nefyn-golf-club.com](http://www.nefyn-golf-club.com) Return to your hotel in the early evening.

**DAY 6: GOLF / CONWY.** Travel today onto the Isle of Anglesey to enjoy a tee time at the Holyhead Golf Club. The course was designed by the ubiquitous James Braid in 1912. [www.holyheadgolfclub.co.uk](http://www.holyheadgolfclub.co.uk) In the afternoon head to Conwy and the Conwy Golf Club, where a tee time is reserved. We have included a two night stay at **The Castle Hotel** in Conwy – [www.castlewales.co.uk](http://www.castlewales.co.uk).



**DAY 7: GOLF / CONWY.** Today 36 holes are included at the Llandudno Golf Club. Return to The Castle Hotel for a second evening.

**DAY 8: GOLF / ST. ANNES.** This morning we include a start at the Mold Golf Club. Later travel northeast into England, where we have included an overnight stay at the **Dalmeny Hotel** in St Annes – [www.dalmenyhotel.co.uk](http://www.dalmenyhotel.co.uk).

**DAY 9: GOLF / MANCHESTER.** Today we have included thirty-six holes of golf. Begin at the Royal Lytham and St Anne's Golf Club, a superb links course and host to ten Open Championships, two Ryder Cups and numerous other tournaments. [www.royallytham.org](http://www.royallytham.org) In the afternoon head to Royal Birkdale which hosted the 2008 Open Championship and has been voted the number one course in Britain and is among the best in the world. [www.royalbirkdale.com](http://www.royalbirkdale.com)



After your rounds today drive back to Manchester, where you will check into Bewleys Hotel for an overnight stay – [www.bewleyshotels.com](http://www.bewleyshotels.com).

**Please note:** You can drop off your rental van at your leisure tonight at the Manchester Airport or if you prefer on your departure day.

**DAY 10: DEPARTURE.** After breakfast today you will take a short shuttle from your hotel (or drop off rental) to the Manchester Airport in time for your departing flight. All flights arranged by U.S. travel agent.

***Exclusive property of In Quest of the Classics [www.iqotc.com](http://www.iqotc.com)***